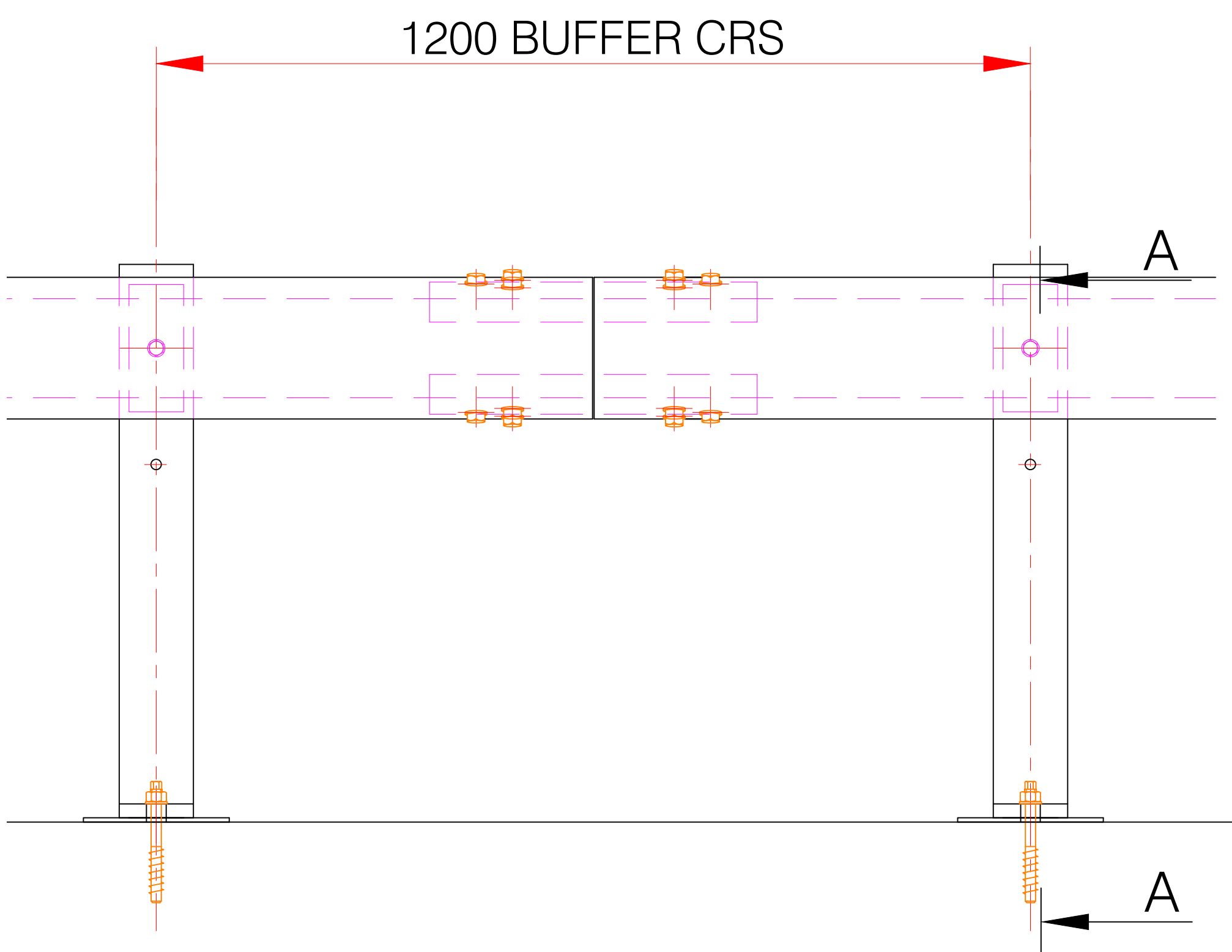
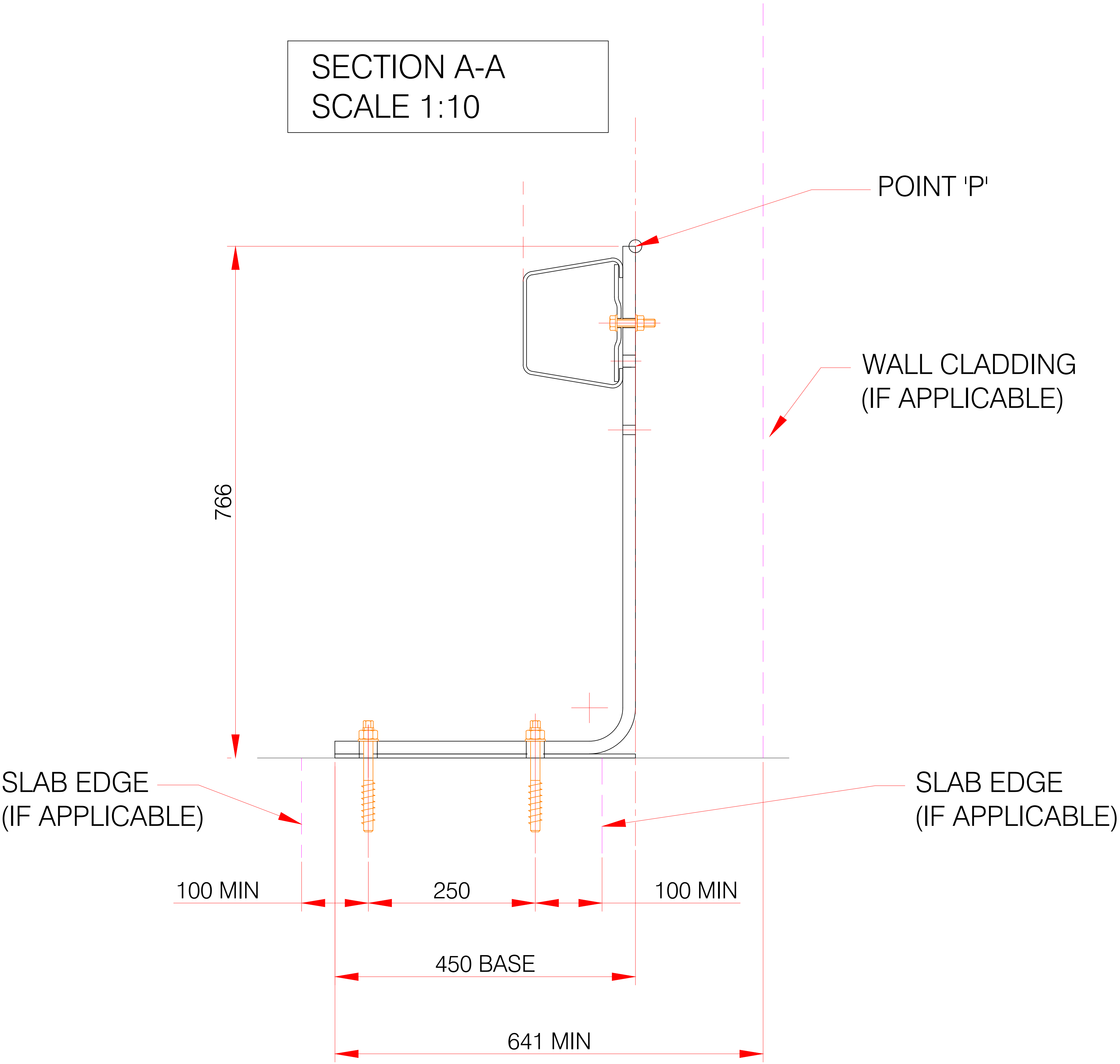


DO NOT SCALE

© Copyright.
Copyright in these drawings vests in Reliable Barrier Systems Ltd & is our exclusive property. They must be treated as confidential & it is forbidden to reproduce or copy or part with the same to any third party without written permission.
Arrangements & components shown are part of a patented system therefore patent protection applies.



ELEVATION ON SPLHG HEAVY DUTY BUFFER for OPEN BOX BEAM SYSTEM

Drawn	Date	Scale
<i>D. Hawthorne</i>	Dec 2024	NTS

FIXING DETAILS FOR SPLHG
HEAVY DUTY BUFFER 1.2M CRS
FOR OPEN BOX BEAM SYSTEM.

**Reliable Barrier
Systems Ltd**

8 Brook Street, Lakeside,
Redditch, Worcestershire,
B98 8NG

Drawing No.
SPLHG760-RBS-011

